

Mikawa Orienteering Club 45th Anniversary Orienteering Event



(World Ranking Event (WRE))

"Hanazawa" Revised 2021-2022

Bulletin I (Ver1.6)

2022.3.9

I. General Information

Opening Date

- April 24 (Sunday) , 2022

Venue

- Onuma-cho and Hanazawa-cho(former Shimoyama village area), Toyota City, Aichi Prefecture , Japan

Venue (Meeting Place)

- Shimoyama Training Center (35-1 Funabashi, Onuma-cho, Toyota City)
(<https://www.city.toyota.aichi.jp/shisetsu/sports/sonohoka/1006788/index.html>)
→Google Map(<https://bit.ly/3m6FAGI>)

Event Official Website

- <https://hekinan1127.wixsite.com/my-site-2>

Access to the Event Center

- Public transportation

(1) From Meitetsu Toyota City Station (East Exit), take the Toyota Oiden Bus on the Shimoyama-Toyota Line and get off at the SHIMOYAMASHISHO (45 minutes 500JPY).

(2) From Meitetsu Higashi-Okazaki Station (North Exit), take the Meitetsu Bus bound for Onuma via Okazaki Kitataka and get off at SHIMOYAMASHISHO (800 yen for 50 minutes).

Timetables, etc.

<https://michinavitoyota.jp/portal/bus.html>

* Approximately 2-3 hours from Central Japan International Airport to Meitetsu Toyota City and Higashi-Okazaki Stations by Meitetsu Train.

- Car

(1) From Nagoya and Toyota, take the Tokai Kanjo Expressway to Toyota Matsudaira IC : Approximately 40 minutes from the IC to the event center.

(2) From Okazaki IC (Tomei Expressway) approximately 45 minutes to the event center.

- Taxis

From Meitetsu Higashi-Okazaki Station and Meitetsu Toyota City Station to the event center, it is about 8,000JPY to 9,000JPY.

※Visit by rental car or taxi is strongly recommended because there is a limited number of buses.

Lodging

- The organizer will not arrange accommodation, If you need the accommodation, please reserve it by yourself.
The links below may be helpful to your reservation.
- Toyota City Shiyoyama Tourism Association
<https://www.karen-shimoyama.jp/stay/>
- Business hotel in Okazaki and Toyota city
Okazaki <https://www.navitime.co.jp/category/0608002/23202/>
Toyota <https://www.navitime.co.jp/category/0608002/23211/>

2. Competition Information

Event type

- Middle distance competition by point orienteering in all classes

Competition Rules

- The M21A and W21A classes are based on World Ranking Events(WRE) rules.
([Organising WRE in FootO | International Orienteering Federation](#))

Doping

- Participants in this event should strive for anti-doping.
- The Japan Doping Regulation applies and there is a possibility of conducting a doping test.
(https://www.playtruejapan.org/downloads/code/JADA_Code_2009_Version2.pdf)

Maps

- Map scale: 1:10,000, Contour interval: 5m,

Start beginning

- 10:30 a.m. (tentative)

Punching system

- An Emit system is used to record the time and controls you visited.
- An Emit card (E-card) is required to participate.
- Please bring your own E-card, or request to borrow it at the time of the application for this event. The rental fee for the E-card is 300 JPY.

Control description

- Based on ISCD2018

Clothing and Equipment

- There are no regulations regarding clothing and shoes. However, please keep in mind your safety as well as public order and morals in your choice of the clothes.
- During the competition, the use of GPS(GNSS)equipment with on image display is prohibited.
- We recommend you to bring a whistle during the competition.

Terrain Overview

- The terrain is located at an altitude of approximately 400–500 m, and has relative heights of approximately 100 m.

The topography consists of medium-sized ridges and valleys, which are in general relatively steep and complex. Many fine topographic features are also present.

The terrain is composed of several areas separated by roads and cultivated lands.

Most areas are planted forest with good visibility, although the visibility is limited in some areas of broad leaved forest.

The vegetation boundaries are relatively abundant.

There are paths with good runnabilities.

Many parts of the terrain require careful navigation, demanding a total orienteering skill.

Climate(24 April)

- Average values for the past 30 years at the Toyota City Observatory (75m above sea level), which is nearest to the venue of this event

Average temperature (° C)	Maximum temperature in a day (° C)	Minimum temperature in a day (° C)	Hours of sunshine (h) a day
15.2	21.4	9.1	6.7

(From Japan Meteorological Agency home page)

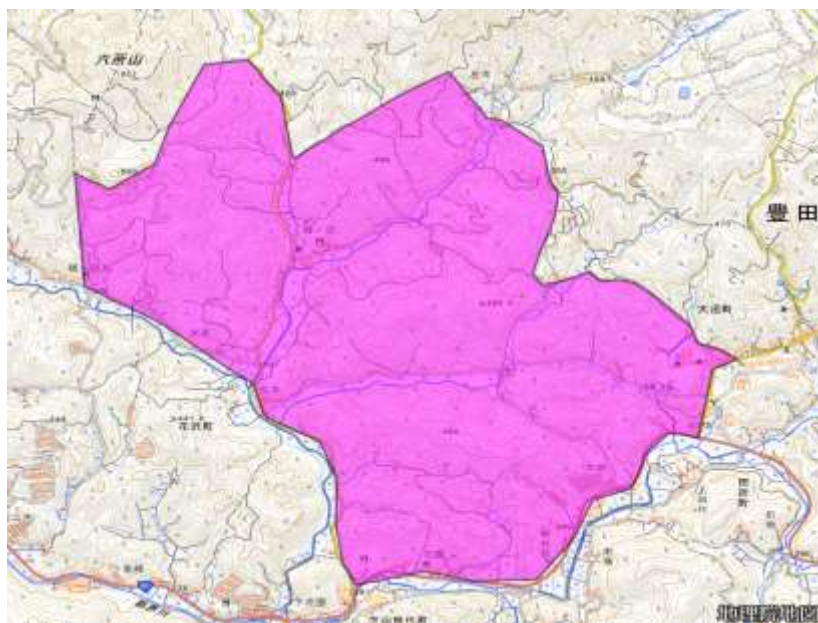
- * Since the altitude of the event venue is approximately 450m, the temperature is estimated to be approximately 2to3°C lower than the above.
- Aichi Weather Rate: Sunny:50.0%,Cloudy:13.3%, Rain:36.7%
(from goo weather <https://weather.goo.ne.jp/>)

Training courses

- We provide no particular training course for this event.

Embargoed area

- Before the event, entry to the area shown in purple on the map below for orienteering purposes is prohibited



3. Class and Entry

Class (WRE) , Entry fee, etc.

● Classes

Class	Sex	Expected winning time
M21A	Men	Approximately 30 minutes
W21A	Women	

● Entry fee

University students on the event day	2,000 JPY
22 years or younger participants	2,000 JPY
Others	5,000 JPY

- The entry fee will not be refunded if you cancel the participation.

Entry

- Entry can be made through the web entry system. (Japan-O-entrY) below.

■ Web entry system (Japan-O-entrY) :

(<https://japan-o-entry.com/event/view/924>) and fill the entry form.

Note 1: Using this entry system, you can pay entry fee by credit card.

Note 2: This entry system is written by Only Japanese, if you need instructions on how to use, please visit the URL below:

https://japan-o-entry.com/public_file/guide_for_foreign_customer.pdf

- Application start schedule : in middle of Feb. 2022
Application deadline: March 28(Monday),2022,23:59(UTC+9)
for all classes
- The rental fee for an Emit card (E-card) is 300 JPY.

4. Other Information

Measures against infection of the new coronavirus, etc.

- Depending on the spread of covid-19, the event may be canceled or postponed.

As a countermeasure against this infectious disease, we will implement measures such as the maximum number of people in the room and ventilation. Participants are required to put on masks indoors and measure body temperature inspections at the entrance of the event center.

In addition, competition results are available online.

Details can be found in the program (Bulletin 2).

- Ministry of Health ,Labour and Welfare

For those who are returning to Japan or entering Japan from abroad :

https://www.mhlw.go.jp/stf/seisakunitsuite/bunya/0000121431_00209.html

Other points to note

- The event program will be posted on the event website by April 17, 2022. Please read the program carefully before participate on.
- The start time is specified for each applicant. As a general rule, you cannot request a time zone for the start.
- The results of the event will be posted on the Lap-Center website(<https://mulka2.com/lapcenter/>) after the event.
- The top three competitors in each class will be awarded as winners. However, the prize giving ceremony may not be held depending on the seriousness of covid-19 pandemic.
- Please consider your own health thoroughly and never overdo it to participate in the event.
In addition, the participant may cause damage, injure, or loss to himself/herself or a third party.
The organizers are not responsible for any of them.
- Personal information given to the organizer by the application will be used for contact to the participant and other purposes necessary for the operation of this event. Entry information (e.g., name, entry class, E-card No.) and the results of the event will be posted on the official page of the event.

- Please note that photos taken by the organizers and other event officials on the day of the event may be used for event reports and future activities related to this event.
- Be sure to take home your own garbage. Also, do not engage in acts that damage nature, such as entering the grounds or fields of private houses or damaging trees.
- This event may be canceled in the following situations.
 - * When a serious disaster risk is expected (e.g., in case of a weather warning).
 - * When many of the participants are expected to be unable to participate (e.g., bad weather, confused transportation, declaration of a state of emergency).
 - * Conditions such as natural disaster or the spread of infectious diseases.
 - * When there is a request from the local government to cancel the event.
 In these cases, the participation fee will be refunded after subtracting the cost of preparing the event.
- You shall agree to all statements regarding this bulletin, including official bulletin boards, in order to participate this event.
- Visa

Please ask your nearest Japanese Embassy for further details or visit following URL for latest information. (https://www.mofa.go.jp/j_info/visit/visa/)

★Organizers, supporters, contact information, etc.

Organizers and Organizers

- Mikawa Orienteering Club

Sponsorship

- Toyota City, Toyota City Board of Education ,
 Toyota City Tourism Association
 Japan Orienteering Association
 Aichi Orienteering Association
 Tokai District Orienteering Club Liaison Council

Event Officers, etc.

- Organizer

Event Secretary : Hideo Inaba (Deputy) Masato Hayashi

- JOA Event Advisor: Tateo Nozawa (Osaka Orienteering Association)

- IOF Event Advisor: Kimiya Ochiai

Contact

- Contact: Akira Tsunooka

(Email: germakira@aol.com)